

2021年9月のコンディション



Oil Pattern Distance:	40 Feet	Reverse Brush Drop:	40 Feet	Oil Per Board:	50 uL
Forward Oil Total:	12.6 mL	Reverse Oil Total:	10.8 mL	Volume Oil Total:	23.4 mL
Forward Boards Crossed:	252 Boards	Reverse Boards Crossed:	216 Boards	Total Boards Crossed:	468 Boards

	Start	Stop	Loads	Speed	Crossed	Start	End	Feet	T.Oil
1	4L	4R	1	14	33	0.0	0.0	0.0	1650
2	5L	5R	1	18	31	0.0	2.5	2.5	1550
3	6L	6R	1	18	29	2.5	5.0	2.5	1450
4	10L	10R	2	18	42	5.0	10.1	5.1	2100
5	11L	11R	2	22	38	10.1	16.3	6.2	1900
6	12L	12R	2	22	34	16.3	22.5	6.2	1700
7	13L	13R	3	22	45	22.5	31.8	9.3	2250
8	2L	2R	0	22	0	31.8	40.0	8.2	0

Navigation: Forward Reverse More

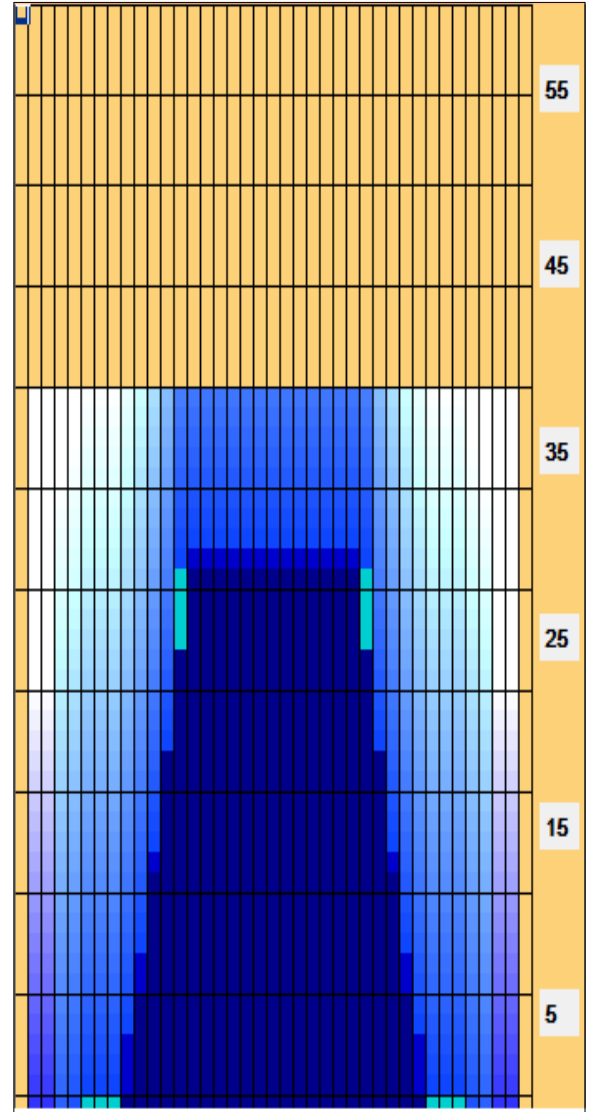
	Start	Stop	Loads	Speed	Crossed	Start	End	Feet	T.Oil
1	2L	2R	0	30	0	40.0	32.0	-8.0	0
2	14L	14R	2	18	26	32.0	26.9	-5.1	1300
3	13L	13R	2	18	30	26.9	21.8	-5.1	1500
4	12L	12R	2	18	34	21.8	16.7	-5.1	1700
5	11L	11R	2	18	38	16.7	11.6	-5.1	1900
6	10L	10R	2	14	42	11.6	7.7	-3.9	2100
7	9L	9R	2	14	46	7.7	3.8	-3.9	2300
8	2L	2R	0	10	0	3.8	0.0	-3.8	0

Navigation: Forward Reverse More

Conditioner:
Type In or Select One

TransferType:
Type In or Select One

- Forward
- Reverse
- Combined
- Buff



Item	3L-7L:18L-18R	8L-12L:18L-18R	13L-17L:18L-18R	18L-18R:17R-13R	18L-18R:12R-8R	18L-18R:7R-3R
Description	Outside Track:Middle	Middle Track:Middle	Inside Track:Middle	Middle:Inside Track	Middle:Middle Track	Middle:Outside Track
Track Zone Ratio	13.33	2.55	1.02	1.02	2.55	13.33

