

2018年1月のコンディション



Oil Pattern Distance:	45 Feet	Reverse Brush Drop:	45 Feet	Oil Per Board:	60 uL
Forward Oil Total:	18.42 mL	Reverse Oil Total:	4.32 mL	Volume Oil Total:	22.74 mL
Forward Boards Crossed:	307 Boards	Reverse Boards Crossed:	72 Boards	Total Boards Crossed:	379 Boards

	Start	Stop	Loads	Speed	Crossed	Start	End	Feet	T.Oil
1	4L	4R	1	18	33	0.0	0.0	0.0	1980
2	5L	5R	1	22	31	0.0	3.1	3.1	1860
3	6L	6R	1	22	29	3.1	6.2	3.1	1740
4	8L	8R	1	22	25	6.2	9.3	3.1	1500
5	9L	9R	3	22	69	9.3	18.6	9.3	4140
6	10L	10R	3	22	63	18.6	27.9	9.3	3780
7	11L	11R	3	22	57	27.9	37.2	9.3	3420
8	2L	2R	0	10	0	37.2	45.0	7.8	0

Navigation: Forward Reverse More

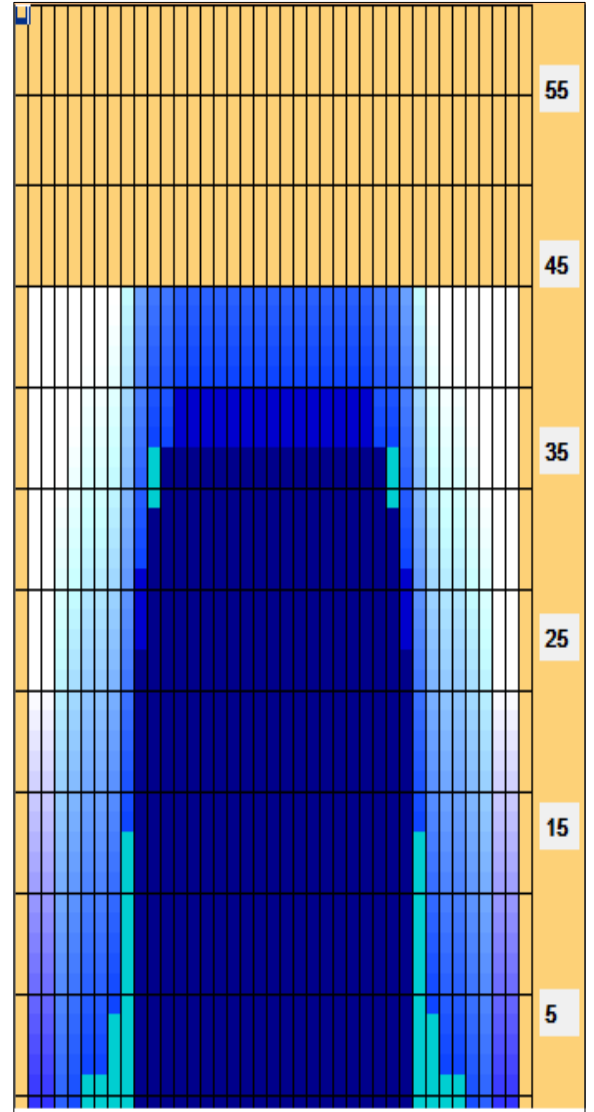
	Start	Stop	Loads	Speed	Crossed	Start	End	Feet	T.Oil
1	2L	2R	0	30	0	45.0	40.0	-5.0	0
2	13L	13R	1	22	15	40.0	36.9	-3.1	900
3	12L	12R	1	22	17	36.9	33.8	-3.1	1020
4	11L	11R	1	22	19	33.8	30.7	-3.1	1140
5	10L	10R	1	22	21	30.7	27.6	-3.1	1260
6	2L	2R	0	22	0	27.6	0.0	-27.6	0

Navigation: Forward Reverse More

Conditioner:
Type In or Select One

TransferType:
Type In or Select One

- Forward
- Reverse
- Combined
- Buff



Item	3L-7L:18L-18R	8L-12L:18L-18R	13L-17L:18L-18R	18L-18R:17R-13R	18L-18R:12R-8R	18L-18R:7R-3R
Description	Outside Track:Middle	Middle Track:Middle	Inside Track:Middle	Middle:Inside Track	Middle:Middle Track	Middle:Outside Track
Track Zone Ratio	9.44	1.6	1	1	1.6	9.44

